



3 μm

Mag = 4.00 K X

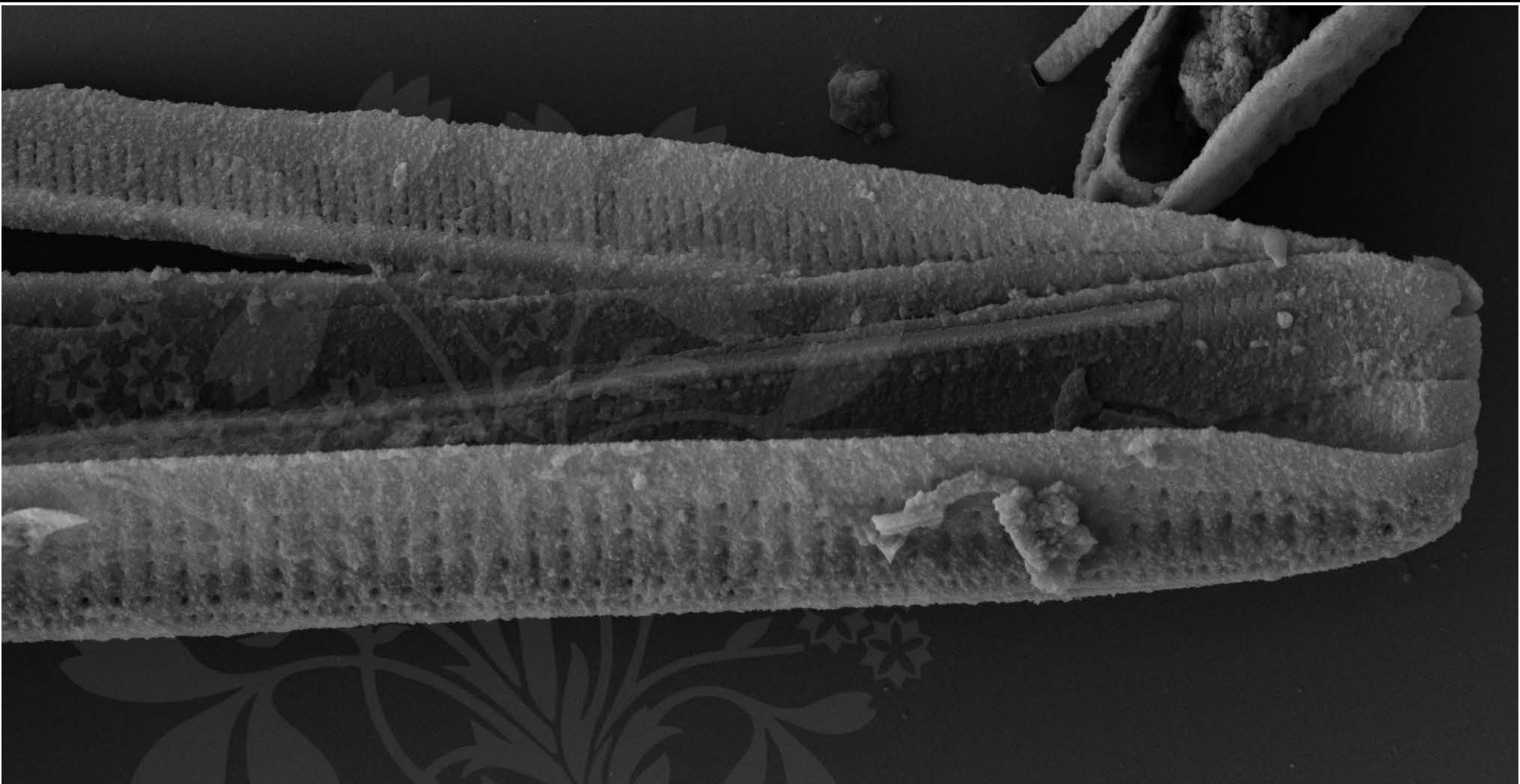
EHT = 5.00 kV

Signal A = SE2 Date :6 Jun 2017

WD = 4.3 mm

File Name = TCC521_01.tif





1 μm

Mag = 13.00 K X

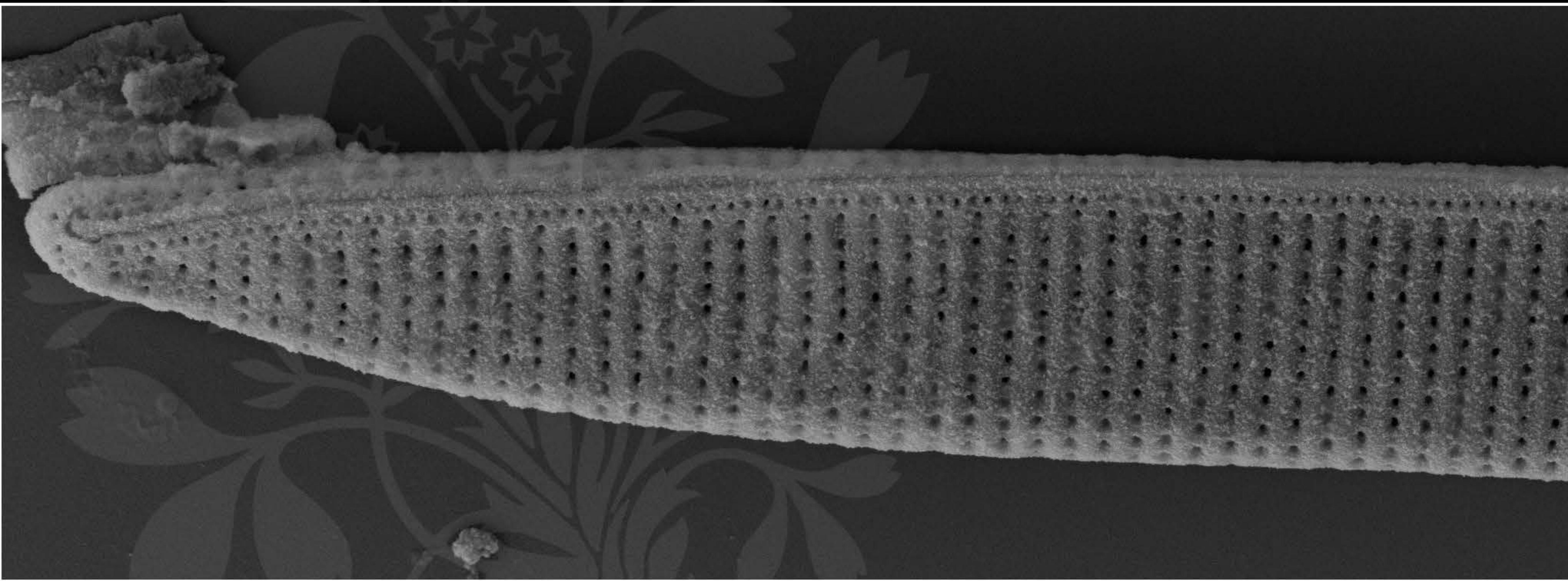
EHT = 5.00 kV

Signal A = SE2 Date :6 Jun 2017

WD = 4.4 mm

File Name = TCC521_02.tif





1 μm

Mag = 13.18 K X

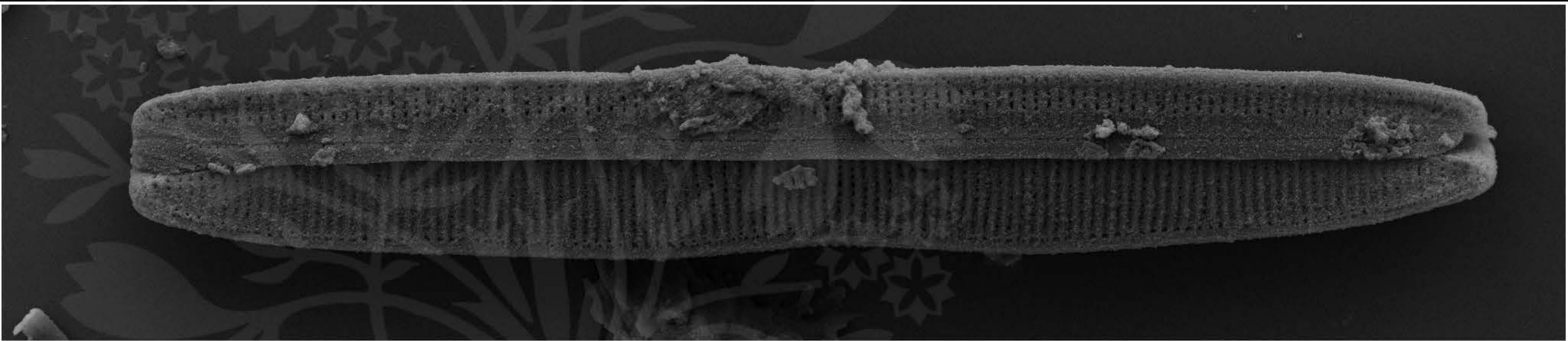
EHT = 5.00 kV

Signal A = SE2 Date :6 Jun 2017

WD = 4.4 mm

File Name = TCC521_03.tif





1 μ m

Mag = 4.85 K X

EHT = 5.00 kV

Signal A = SE2 Date :6 Jun 2017

WD = 4.4 mm

File Name = TCC521_04.tif

